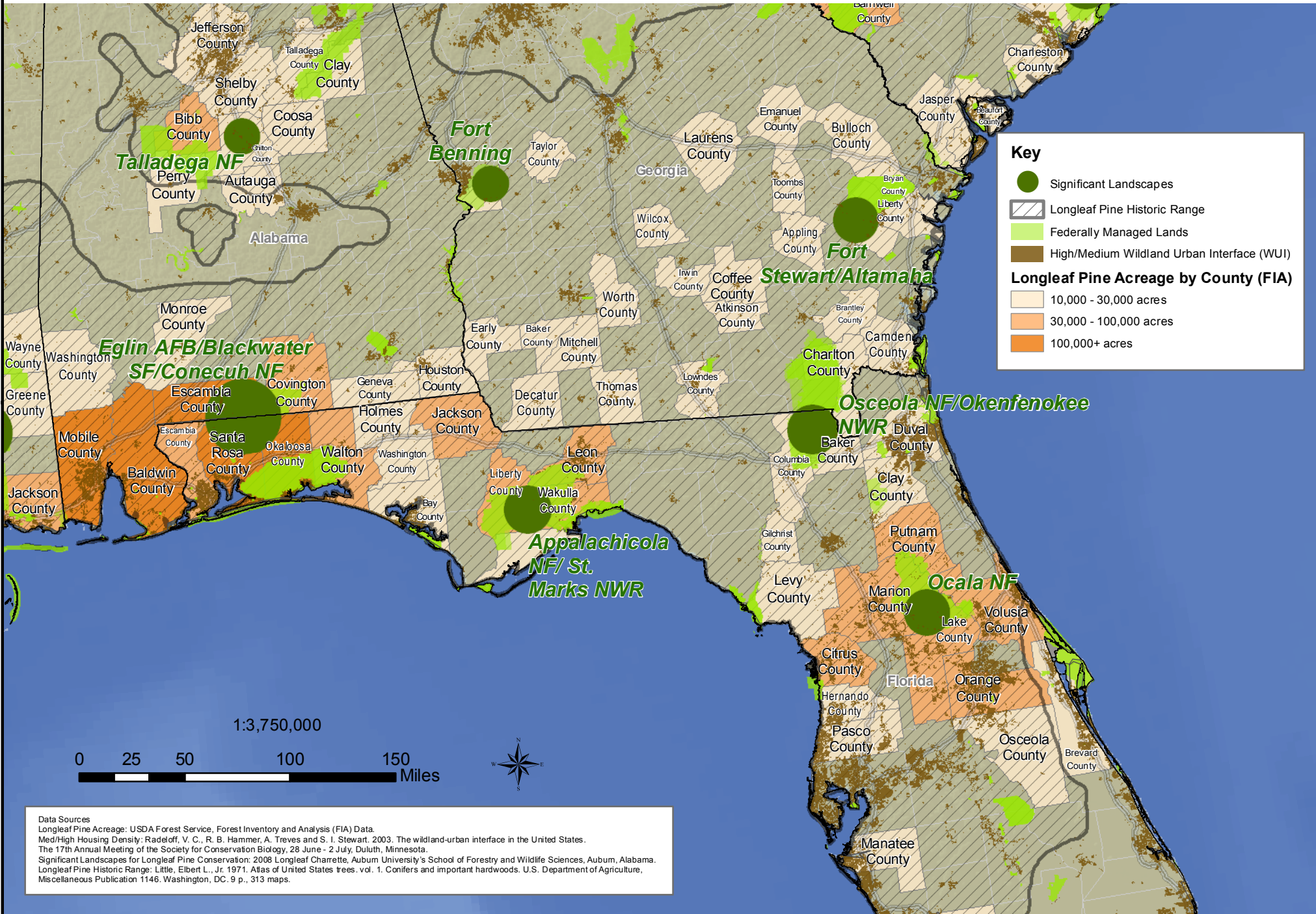


SIGNIFICANT LANDSCAPES FOR LONGLEAF PINE CONSERVATION



Data Sources
 Longleaf Pine Acreage: USDA Forest Service, Forest Inventory and Analysis (FIA) Data.
 Med/High Housing Density: Radloff, V. C., R. B. Hammer, A. Treves and S. I. Stewart, 2003. The wildland-urban interface in the United States. The 17th Annual Meeting of the Society for Conservation Biology, 28 June - 2 July, Duluth, Minnesota.
 Significant Landscapes for Longleaf Pine Conservation: 2008 Longleaf Charrette, Auburn University's School of Forestry and Wildlife Sciences, Auburn, Alabama.
 Longleaf Pine Historic Range: Little, Elbert L., Jr. 1971. Atlas of United States trees. vol. 1. Conifers and important hardwoods. U.S. Department of Agriculture, Miscellaneous Publication 1146. Washington, DC. 9 p., 313 maps.