

SERPPAS 101

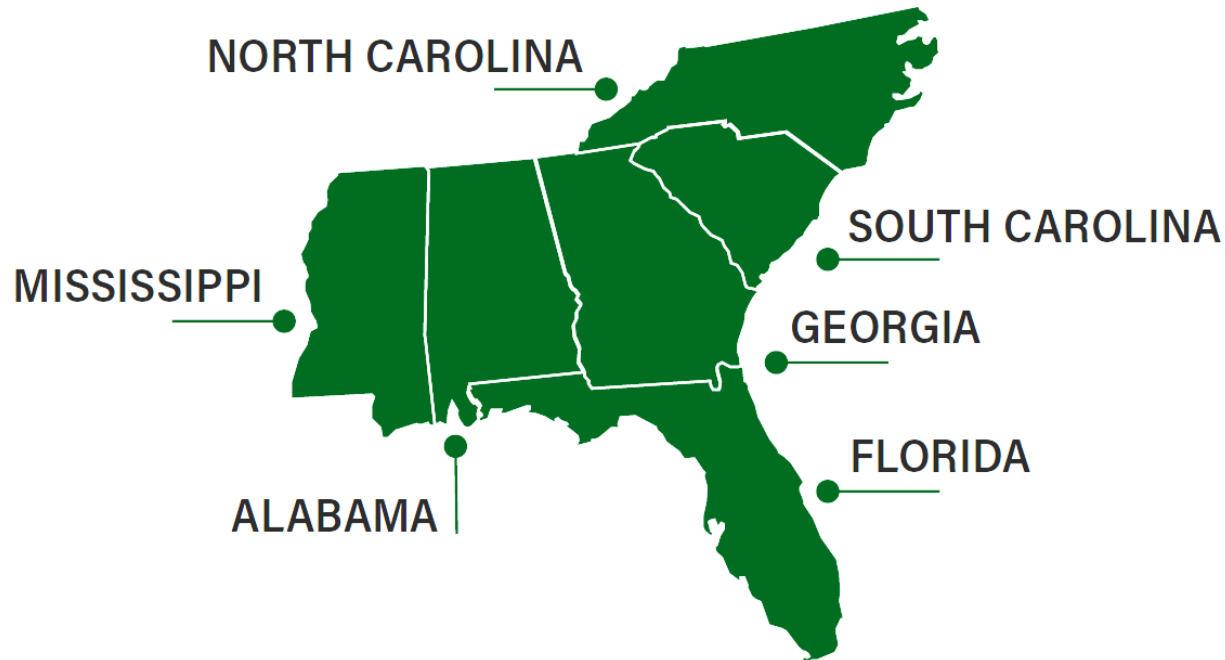
Southeast Regional Partnership for
Planning and Sustainability

Overview Brief



What is SERPPAS

- Established in 2005, SERPPAS is a unique six-state partnership that promotes collaborative decision-making to support the conservation and resilience of national defense, natural resources, working lands and communities in the Southeast

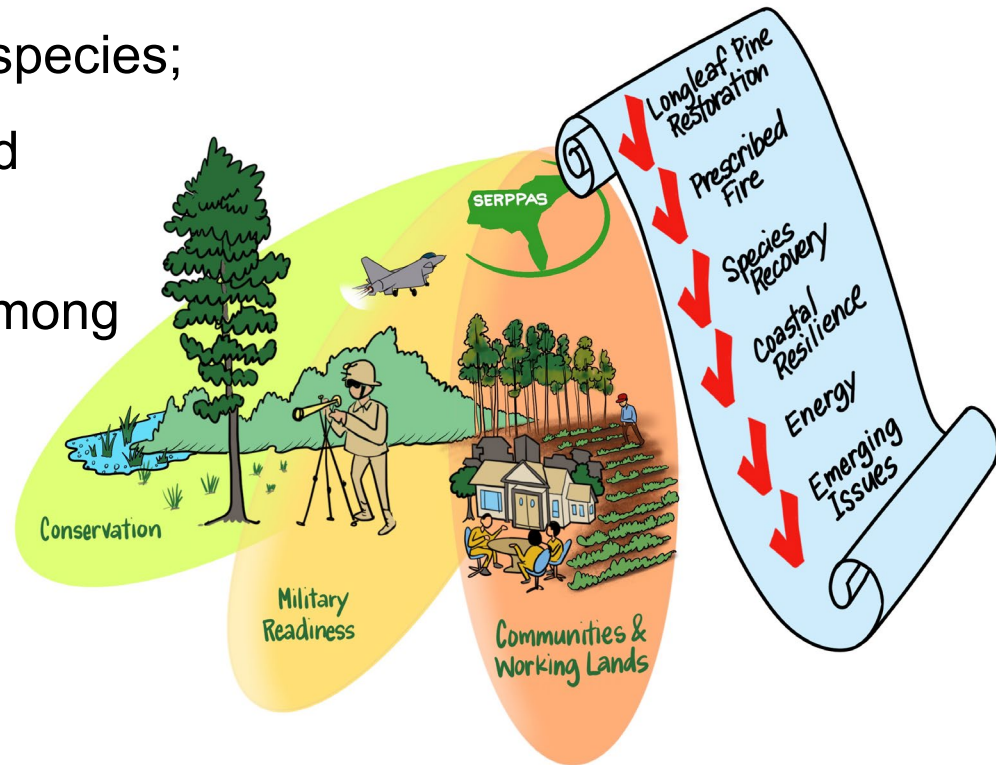


Southeast Regional Partnership for
Planning and Sustainability (SERPPAS)



What is SERPPAS

- SERPPAS promotes collaborative decision-making between public and private partners to:
 - support the military mission;
 - conserve key habitats and species;
 - sustain rural economies and industries; and
 - foster better coordination among local, state, and federal stakeholders in the region.



Principals and Member Agencies

STATES

Alabama

Florida

Georgia

Mississippi

North Carolina

South Carolina

*State involvement includes State agencies with responsibilities for natural resources, working lands and military affairs

FEDERAL AGENCIES

Office of the Secretary of Defense

Military Service Departments
(Army, Navy, Air Force, Marine Corps)

US Army Corps of Engineers

US Forest Service

US Fish and Wildlife Service

USDA Natural Resource Conservation Service

US Environmental Protection Agency

US Geological Survey

National Oceanic and Atmosphere Administration



Principals and Member Agencies

- Principal members are the senior leadership of participating State and Federal agencies and leaders from the Department of Defense and the military services
- Co-chaired by Principals representing the:
 - Department of Defense’s Office of the Secretary of Defense
 - Current: Mr. Richard Kidd, Deputy Assistant Secretary of Defense for Environment & Energy Resilience
 - State partners (2-year term)
 - Current (2021 – 2023): Ms. Callie DeHaven, Director of State Lands, FL Department of Environmental Protection
- The State Principal serves on a rotating basis
- The Steering Committee is comprised of a Principals’ representative



Mission and Objectives

- SERPPAS mission: to seize opportunities and solve problems in value-adding ways that provide mutual and multiple benefits to the partners, sustain the individual and collective missions of partner organizations, and secure the future for all the partners, the region, and the nation.



Minimize incompatible development with decisions that are beneficial to the military mission, community well-being, rural economics, and environmental requirements.



Increase partnerships to improve conservation, the economy, quality of life, resilience, and military readiness.



Utilize data rich and GIS-based maps to identify overlapping and compatible partner priorities.



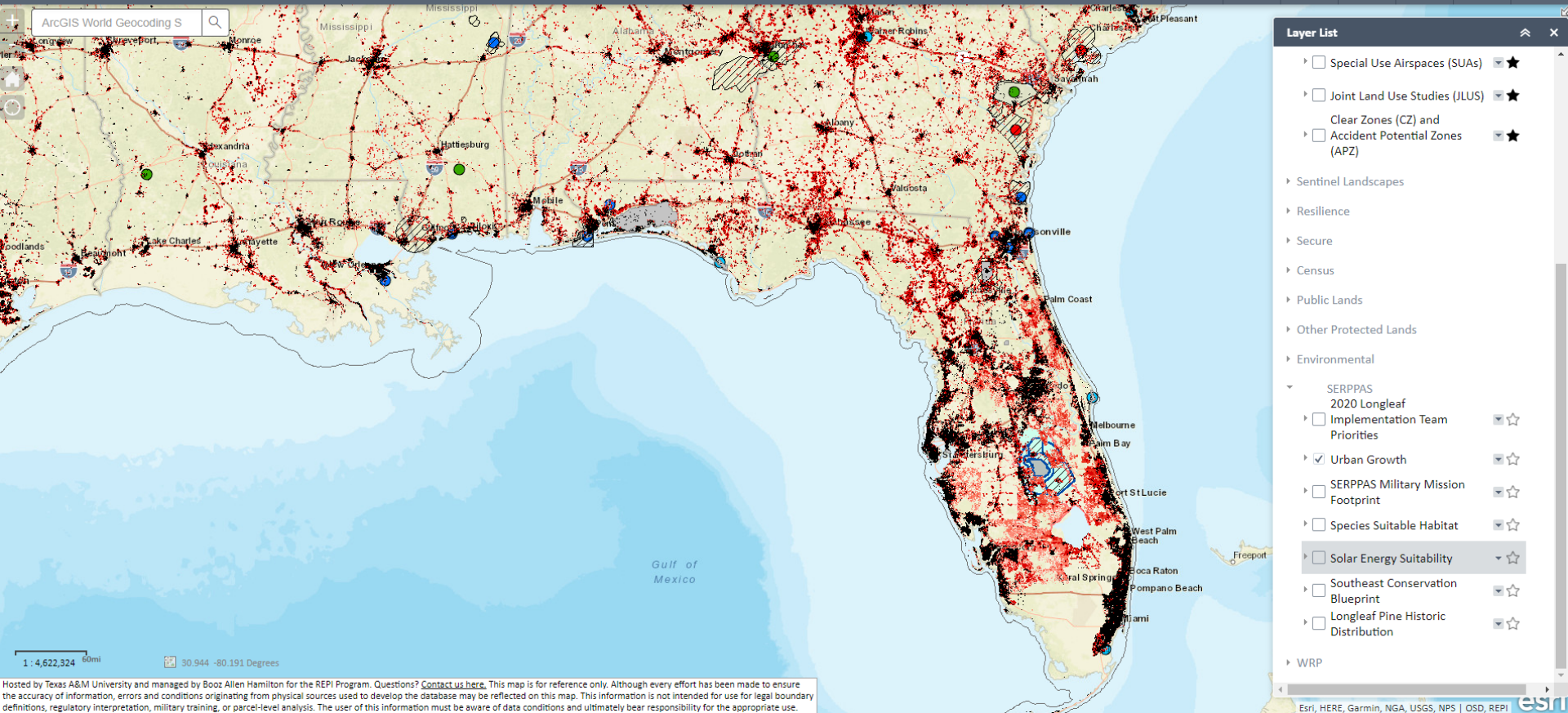
Develop policy initiatives and promote innovative projects that support the SERPPAS mission.



SERPPAS Good Map

REPI Interactive Map

Readiness and Environmental Protection Integration Program



Hosted by Texas A&M University and managed by Booz Allen Hamilton for the REPI Program. Questions? [Contact us here](#). This map is for reference only. Although every effort has been made to ensure the accuracy of information, errors and conditions originating from physical sources used to develop the database may be reflected on this map. This information is not intended for use for legal boundary definitions, regulatory interpretation, military training, or parcel-level analysis. The user of this information must be aware of data conditions and ultimately bear responsibility for the appropriate use.



Southeast Regional Partnership for Planning and Sustainability (SERPPAS)



SERPPAS Focus Areas



Sentinel Landscapes in the Southeast

Connects currently designated and future Sentinel Landscapes to address shared challenges, share lessons learned, and promote the Sentinel Landscapes Partnership's mission in the Southeast.



At-Risk, Threatened, and Endangered Species

Collaborates with partners to promote innovative strategies for conservation of at-risk and listed species and increases flexibility for addressing impacts to both military missions and species.



Southeast Prescribed Fire Initiative

Develops and implements a Comprehensive Prescribed Fire Strategy that promotes prescribed fire as a land management tool to minimize the risk of destructive wildfires while restoring critical habitat and species in the Southeast.



Coastal Resilience and Regional Adaptation

Fosters collaboration among partners to build capacity, develop plans, share resources, and implement projects that address climate adaptation and increase resilience for military installations and communities.



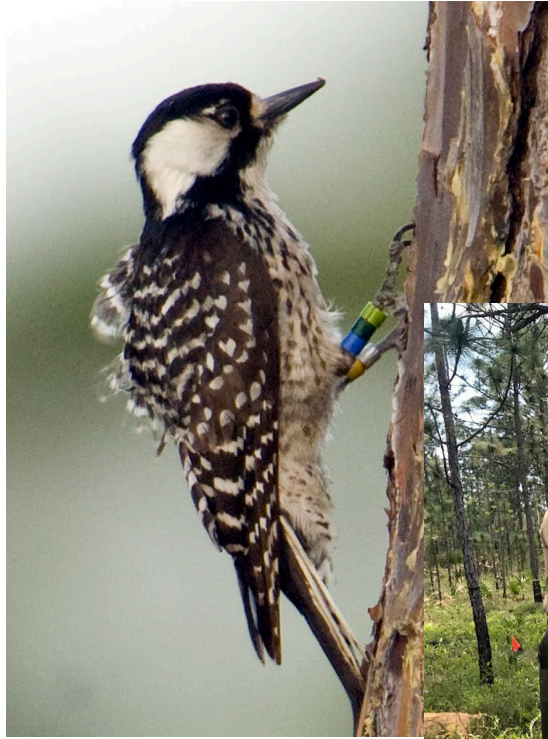
Energy Development and Siting

Collaborates with partners to encourage robust coordination and promote effective use of new or existing tools that could aid developers' ability to address potential impacts to military mission and natural resources.



SERPPAS 101

SERPPAS Solutions



Southeast Regional Partnership for
Planning and Sustainability (SERPPAS)



SERPPAS 101

SERPPAS Solutions



SENTINEL LANDSCAPES



Report on Effects of a Changing Climate to the Department of Defense



January 2019

Office of the Under Secretary of Defense for Acquisition and Sustainment



Southeast Regional Partnership for Planning and Sustainability (SERPPAS)



SERPPAS Meetings

- Annual Principals Meeting (May)
- Annual Steering Committee Meetings
 - Spring (March)
 - Fall (September)
- Annual Focused Meeting (Winter)
 - To delve deeper into a topic or topics led by SERPPAS work groups



Annual Principals Meeting

- Each year, the SERPPAS Principals Meeting serves as an opportunity to:
 - Connect the SERPPAS Principals to each other and the progress towards the SERPPAS mission
 - Highlight a specific geographic area that represents a component of the military mission (different states and military installations as the host) as well as the unique ecosystems and natural resource challenges
 - Connect with the people and communities that rely on and sustain both.



Contact Information

<https://serppas.org/>
info@serppas.org

SERPPAS Coordinator:

Addie Thornton – addie.thornton@ag.tamu.edu

Hannah Sodolak – hannah.sodolak@ag.tamu.edu

Meghan Riley – meghan.riley@ag.tamu.edu

